

TITLE: Surface Decontamination of Aromatic Liquids (Toluene) by DeconGel[™] 1101 and 1102

ABSTRACT

Surface decontamination efficacy determination of DeconGel[™] 1101 and 1102 on stainless steel, floor tile, and concrete surfaces contaminated with aromatic liquids (toluene) was performed using LC/MS (Liquid Chromatography/Mass Spectrometry) according to Environmental Protection Agency (EPA) SW-846 Methods: 3500C (sampling) and 8321B (analysis).

HAZARDOUS MATERIALS RELEVANCE

Toluene is a volatile aromatic hydrocarbon widely used as a solvent, industrial feedstock, and as an octane booster in gasoline fuels. If inhaled, ingested, or internalized in large quantities, toluene can cause neurological, liver, and kidney damage, unconsciousness, and death. Toluene was chosen as a representative aromatic liquid; DeconGel is expected to have similar efficacy towards the wide range of aromatic liquids.

SUMMARY RESULTS

- Excellent surface decontamination was achieved by applying both DeconGel 1101 and 1102, both via brushing or pouring (non-brushed) onto contaminated surfaces, resulting in encapsulation of toluene contaminant by DeconGel's active components. Decontamination efficacies of poured DeconGel 1101 ranged from 99.5% (on concrete) to 99.8% (on floor tile) to 99.8% (on stainless steel), brushed DeconGel 1101 ranged from 100% (on concrete) to 100% (on floor tile) to 100% (on stainless steel), as determined by residual swipe analysis. Decontamination efficacies of poured DeconGel 1102 ranged from 100% (on concrete) to 100% (on floor tile) to 100% (on stainless steel), brushed DeconGel 1102 ranged from 100% (on concrete) to 100% (on floor tile) to 100% (on stainless steel), as determined by residual swipe analysis.
- Optimized experimental and analytical methods were successfully developed following standardized EPA sampling and analysis methods as guidelines for determination of organic compounds dissolved in a suitable solvent able to completely solvate toluene as well as DeconGel components. When deemed necessary, experimental methods were customized to afford complete dissolution of organic contaminants. Additionally, analytical methods and associated equipment (LC column, LC gradient program, MS sample ionization parameters) were appropriately developed to ensure accurate decontamination efficacy determination of DeconGel.

RESULTS

Table 1 shows the decontamination efficacies of DeconGel 1101 and 1102 on stainless steel, floor tile, and concrete surfaces contaminated with aromatic liquids (toluene) as determined by residual swipe testing.

Table 1. Decontamination efficacies of DeconGel 1101 and 1102 on toluene (aromatic liquid) on stainless steel, floor tile, and concrete surfaces as determined by residual swipe testing.

Swipe Testing (ppm)		Formulation	
		DeconGel 1101	DeconGel 1102
Stainless Steel	Control	658.42 ± 2.86	658.42 ± 2.86
	Residual (non-brushed)	1.32 ± 0.10	ND*
	Residual (brushed)	ND	ND
	Decon. Efficacy (non-brushed) (%)	99.8 ± 0.0	100**
	Decon. Efficacy (brushed) (%)	100**	100**
Floor Tile	Control	631.67 ± 1.07	631.67 ± 1.07
	Residual (non-brushed)	1.33 ± 0.06	ND
	Residual (brushed)	ND	ND
	Decon. Efficacy (non-brushed) (%)	99.8 ± 0.0	100**
	Decon. Efficacy (brushed) (%)	100**	100**
Concrete	Control	482.95 ± 0.62	482.95 ± 0.62
	Residual (non-brushed)	2.48 ± 0.07	ND
	Residual (brushed)	ND	ND
	Decon. Efficacy (non-brushed) (%)	99.5 ± 0.0	100**
	Decon. Efficacy (brushed) (%)	100**	100**

1571x dilution factor for samples and controls

* ND: Not Detected, Limit of Detection (LOD) for toluene approximates 250 ppb

** An ND value for residual experiments results in a Decontamination Efficacy of 100%

NOTES

- ASTM method E1728-03, a standardized swipe testing method used for sampling of contaminants, was the integral method used to accurately evaluate DeconGel's decontamination efficacy. Air-dried GhostWipe™ (Environmental Express; Mt. Pleasant, SC) swipes were utilized in this swipe testing method.
- Standardized EPA SW-846 Sampling Method 3500C "Organic Extraction and Sample Preparation" was followed as a guideline to prepare all samples and controls. All samples, controls, and standards were prepared using the same solvent and appropriate experimental conditions to ensure accurate and LC/MS instrumental analysis.
- LC/MS instrumentation is a sensitive and accurate analytical tool for qualitative and quantitative determination of a large number of organic compounds. Standardized EPA SW-846 Analytical Method 8321B "Solvent-Extractable Nonvolatile Compounds by High-Performance Liquid Chromatography/Thermospray/Mass Spectrometry (HPLC/TS/MS) or Ultraviolet (UV) Detection" was followed as a guideline to prepare all samples and controls.
- To ensure accurate determination of DeconGel decontamination efficacy, a standard curve of the analyte of interest was prepared using sufficiently pure analyte; the respective

standards were diluted to a known concentration (ppm) using the same solvent as used for samples and controls.

CALCULATIONS

Decontamination Efficacy (Swipe Testing) =

$[(\text{Contaminant (ppm) of Swipe Control}) - (\text{Contaminant (ppm) of Residual Swipe}) / \text{Contaminant (ppm) of Swipe Control}] \times 100\%$

MATERIALS AND METHODS

Sample Method

In a typical procedure, 40 uL of contaminant was evenly applied via brushing on 1) stainless steel (surface area: 56.3 cm²), 2) floor tile (surface area: 100 cm²), or 3) concrete (industrial grade, surface area: 56.3 cm²) coupons. Approximately 6.0 g of DeconGel 1101 was poured onto the contaminated surface and let to dry for 24 h. Dried DeconGel samples were peeled off the contaminated surface, and the surface was swipe tested (ASTM method E1728-03) using an air-dried GhostWipe™ swipe (Environmental Express; Mt. Pleasant, SC). Swipe and gel samples were suspended in 50 mL DMSO for 24 hours. Samples were then analyzed via LC/MS (see below).

Control Methods

For swipe control samples, a respective amount of contaminant was evenly applied via brushing on 1) stainless steel (surface area: 56.3 cm²), 2) floor tile (surface area: 100 cm²), or 3) concrete (industrial grade, surface area: 56.3 cm²) coupons, and the surface was swipe tested (ASTM method 1728-03) using an air-dried GhostWipe™ swipe (Environmental Express; Mt. Pleasant, SC). Swipe samples were suspended in 50 mL DMSO for 24 hours and analyzed via LC/MS (see below).

Reagents and Standards

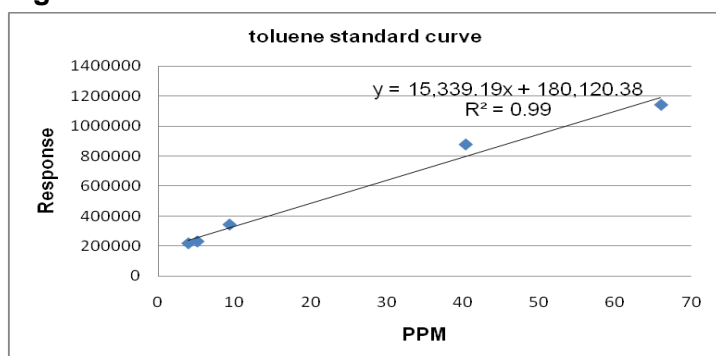
Toluene (methylbenzene) (CAS# 108-88-3, Fisher Scientific; Fair Lawn, NJ) was used as received.

Analytical Instrumentation.

A Thermo LCQ LC/MS with autosampler in positive mode was used to determine toluene concentration (ppm, wt/wt) of all samples and controls, using a Grace Davison (Deerfield, IL) C18-Select analytical column (150 x 4.6 mm, 5 um).

A 5-point standard curve derived from three independently prepared stock solutions was prepared using DMSO as the working solvent. The calibration curve exhibits a curve fitting as approximated by the coefficient of determination of linear regression R², where R² = 0.99 (see Figure 1).

Figure 1. Toluene standard calibration curve



APPLICATION INSTRUCTIONS FOR END-USERS

Use product directly as is from container. **DO NOT DILUTE.** Masking or painters tape can be applied along one edge of the area that is to be decontaminated to aid creating a peeled edge to grip for peeling the dried film. Apply DeconGel using a paint brush, a trowel, a handheld sprayer, or an industrial grade sprayer (use DeconGel 1120 or 1121 for spray application).



The thickness of the gel and the number of coats is dictated by the surface to be decontaminated. Coating thickness required for good peel characteristics varies with substrate and generally increases with substrate porosity. It is recommended that first time customers test DeconGel on a small sample area to confirm the required film thickness and dry time for their specific application. If the film is difficult to peel, please apply an additional coat. A razor blade is useful to start the peel. Lay the blade nearly flat and fillet the edge of the film to create a tab that can be pulled. For surfaces that the gel adheres to well, such as concrete, 12” – 24” strips can be cut in the film resulting in less force being required to peel the film.

➤ **Let DeconGel dry for 24 hours**

Dry time will vary depending on humidity, temperature, air flow and thickness of the DeconGel. This can take from as little time as an hour for thin coats in a dry environment with plenty of airflow, to overnight or longer if thicker coats are applied in humid environments. Dry times exceeding 24 hours may sometimes be required for good peel performance on bare concrete, wood and other highly porous substrates and substrates with deep cracks or grooves. However, 18-24 hours is often sufficient dry time on good quality concrete. It is recommended that users test a small area to determine drying time prior to applying DeconGel for an entire job. Supplemental heat or air circulation will accelerate DeconGel's drying time for any job.

- Peel DeconGel off the surface by starting from one of the edges



When dry, the product locks the contaminants into a polymer matrix. The film containing the encapsulated contamination can then be peeled. DeconGel peels from most non-porous and porous hard surfaces if the dried film is thick enough. If the film is difficult to peel, add another coat, let dry, and peel. In most cases the DeconGel will come off in a single sheet but for odd shaped surfaces you may be required to score DeconGel in order to peel it off.

- Dispose of the dried DeconGel in accordance with the local, state and Federal disposal regulations of the contaminant/substance you are removing. DeconGel itself has no special disposal restrictions.



For questions about DeconGel or to place an order, visit our website at www.decongel.com or contact us at:

CBI Polymers Inc.
1946 Young Street, Suite 480
Honolulu, Hawaii 96826
(808) 949-2215 ext. 146
orders@decongel.com